



Newsletter

Community Bank · Leopold

A remarkable 12 months!

As the festive season fast approaches we all start looking forward to spending time with our family and friends; we take this time to have a look at what has been achieved throughout 2024.

A new branch location

Over the end of March and early April we undertook the demolition of the Dorothy Street premises.

During April and early May the space was fitted out creating a fresh, modern space for our branch staff and customers. On 14 May the branch opened its doors to the public. On 6 June an official community opening was held.

In July, solar panels were installed at the branch demonstrating our commitment to reducing our environmental footprint.



Branch performance

In May we appointed a new Branch Manager (Lee McCaffrey) with Hannah taking parental leave.

We said goodbye to Dominique Adams who returned to Bendigo Bank after taking a promotion. And we employed Kellie Stone as a Customer Service Officer replacing Paige Rockliff who has been promoted to Customer Relationship Officer.

As our footings continue to grow, the company had a strong financial year ending June 2024 with a nominal profit \$437,463. Our customer base continues to grow showing the commitment the community has to our company.

Dividends

With the 10 cents fully franked dividend announced at the Annual General Meeting, this takes the total amount given in dividends to shareholders to \$678,696.57.

Community Investment

This year we saw the total of community investment, raise to over \$2 million.

Whether you are young or young at heart, it is likely you have been involved in something supported by Community Bank Leopold.

What a remarkable year continued.

15 year celebration

On 3 April we celebrated 15 years of the Community Bank in Leopold. Over 80 shareholders, past and present staff and directors, and representatives of our community gathered for a high tea to mark the occasion.

The milestone was honoured by the creation of a book – Our Story – highlighting the work undertaken to get a Community Bank in Leopold and the subsequent achievements over the 15 years. A digital copy of this book is available on our website.

Our professional team

The financial success of the company is due to the hard work and dedication of the branch staff. Please call into the branch to see how they can support you in your banking needs.

Lee McCaffrey – Branch Manager

Joined the Leopold team on 13 May 2024. Lee has worked in the finance industry for 20 years and brings a wealth of knowledge. He comes to the position having had 10 years as a Bank Manager and 3 years as a national trainer specialising in staff and community development. In his spare time Lee likes to spend his time cooking and trying out new recipes. Lee is looking forward to meeting with all the local customers and hopes to develop long lasting relationships.

Belinda Gillett – Customer Relationship Manager

Joined the Leopold team on 14 November 2022. Belinda has worked in a variety of roles in her 19 years with Bendigo Bank. She came to Community Bank Leopold in 2022 as a home lender. She states she loves working with the most amazing group of people at Leopold. Belinda has lived in Geelong her whole life and is now living in Charlemont with her twin sister. When not at work, Belinda enjoys cooking and attending dance classes. Her favourite relaxation activity is sewing and making teddy bears while watching movies.

Robyn Collier – Customer Relationship Manager

Having previous banking experience, Robyn was one of the original Community Bank Leopold staff members commencing on 3 April 2009. Over this time, she has become a well-known face in the branch, who is always there to help with her wealth of knowledge.

Robyn moved to Leopold when she was young and stayed. She raised her family in the Leopold community, and when not working she spends time with her family and enjoys camping.

Danielle Jolley – Customer Relationship Officer

Joined the Leopold team on 14 February 2022. Danielle moved to Geelong from WA in 2005 and has raised her family here. When not working she likes to go hiking and adventuring around both Australia and overseas. Having previous banking experience, Danielle jumped at the chance to work at Community Bank Leopold. Since then, she has been a friendly face and is eager to deliver exceptional customer service whilst finding solutions for her customers and their individual circumstances and banking needs.

Paige Rockliff – Customer Relationship Officer

Paige joined the Leopold team on 21 February 2022. Paige has lived in Geelong most of her life, joining the team at Community Bank Leopold as a Customer Service Officer after 14 years in hospitality and customer service. During this time Paige gained a passion for customer service. When she's not at the branch she's at home reading books, practicing her clarinet, singing and playing with her cockatiel.

Mandy Breen – Customer Service Officer

Mandy joined the Leopold team on 8 May 2023. She originally comes from the small country town and moved to Geelong some 40 years ago where she has raised her two children. She joined the Community Bank Leopold team searching for a more positive work life balance, after working for 38 years with Kmart. Outside of work she loves to spend time with her family and friends; and loves to holiday anywhere that is warm.



Our professional team continued.

Melissa Henderson - Customer Service Officer

Melissa joined the Leopold team on 18 September 2023. She moved around a lot in her childhood for her father's work, and attended a number of primary schools, making new friends along the way. For the past 22 years she has lived in Clifton Springs and has 2 adult children. On the weekends she likes to watch her boys play football for Drysdale, and in her spare time she goes to the gym and enjoys reading. She has enjoyed making new friends with the staff at the branch and continues to be a friendly face at the branch.

Kellie Stone - Customer Service Officer

Kellie recently joined our team from the West Geelong branch of Bendigo Bank. Outside of working in the banking sector, Kellie spent time in the disability services industry in Marketing and Fundraising roles, then in Compliance Roles. Outside of work she is involved in FC Leopold through her youngest of four children and can often be seen at the Sporties on Members Nights or on the squash courts. She is an animal lover having 4 dogs, 4 cats, 4 chooks and 1 guinea pig. She is proud to represent Community Bank Leopold, making profits to feed into our local community.

Meet your Board

The Board is comprised of independent volunteer directors who are committed to a high standard of corporate governance, financial reporting and integrity in the company's operations.

Kylie Clayton - Chairperson

Kylie joined the board in May 2020. Much of Kylie's spare time is spent supporting her children in their sporting endeavours, from swimming, soccer with Geelong Rangers, and AFL with Leopold Football & Netball Club. Kylie is a member of the committee for Live Love Leopold and joined the Board in 2020. She enjoys renovating as well as travelling. Professionally, Kylie is a Certified Chartered Occupational Health & Safety Professional and Principal Auditor and comes from a strong background in leadership & executive coaching, with 20 years' experience working with and leading teams across operations and corporate support roles.

Paul Madden - Treasurer

Paul lived in Leopold for over 30 years with his wife and four sons and currently resides in Moolap. He has been a self-employed Public Accountant, CPA, for forty years. His interests include cycling, sea kayaking, motorcycle riding, table tennis and collecting money boxes, Australian stamps and antique family bibles. He is a volunteer for the Bicycle Network (operates Around-The-Bay-In a Day and The Great Victorian Bike Ride) and Blazead. Paul has been involved since the establishment of the Steering Committee (2007) and has had an active role since the company was formed in 2008. He currently holds the position of Treasurer.

Bronwyn Shearer - Company Secretary and Executive Officer

Bronwyn has been a Leopold local for over thirty years. She has worked in various social work positions with a flair for employment and training. She spent ten years working with Boards in the areas of governance practices, strategy and board evaluations. She is passionate about travel, especially cruising. Her role on the board supports community groups through managing the grants, donations and sponsorships programs as well as assisting them with applications from other funding bodies. She is also the board contact for all things shareholder. Bronwyn joined the Board in 2015 and continues to her skills to strengthen its' governance practices.

Ramona Browne - Director

Ramona joined the board in June 2020. She has lived in Leopold for over 20 years and is a parent of two local primary school aged children. She has a love for our beautiful community, its people and supporting all things local. In recent years, she has held Executive roles on Leopold Primary School Council, Leopold Little Athletics, Leopold Playgroup and Leopold Kindergarten. Her family is also involved with the local soccer club - FC Leopold. Ramona's professional background is in Contract Management (International Trade), Human Resources and Tertiary Education.



Meet your Board continued.

Michelle Jones - Director

Michelle joined the board in May 2023. She lives in Leopold with her husband, and her daughter who attends Leopold Primary School. Michelle is a member of the Wallington Cricket Club. As a freelance HR consultant Michelle has been providing support, advice, and expertise in HR policy development and Enterprise Agreement bargaining.

Michelle is very much a people person, and prides herself on her ability to build rapport with others, she has a can-do attitude and applies a practical approach to all that she does.

Kerrie Napoli - Director

Kerrie commenced on the board on May 2023. She and her husband raised their four children in Leopold, with three of their children continuing to live locally with their families. Kerrie is a mental health social worker and family therapist working in private practice in Geelong and has worked in the health and human services sector for 44 years. More recently she has been in private practice working with vulnerable children, young people and families and consulting to government and non-government organisations.

John Leach - Director

John has lived in Leopold with his wife, Joan, for over 45 years and they have two adult children. His experience has been in various accounting roles in industry and local government. Over the years he has also used his vast experience in supporting many local sporting clubs and community groups. John previously spent 3 years on the Board from 2017 to 2020 and returned for a second term as director in 2023.

Tiffany Quick - Director

Tiffany joined the board in May 2023. She grew up in Geelong and despite travelling for two years post university, chose Geelong to settle and raise a family. She is a qualified Social Worker working primarily in the Child and Family sector, until she had a career change 13 years ago. Now, a Senior Leader within the Victorian Public Service, Tiffany has a passion for Operational Leadership, Inclusion and Diversity, Reconciliation, supporting the most vulnerable in the community, road safety, connection to community and homelessness issues. In her spare time, you will find Tiffany walking her dog on the local trails, utilising the local library and gardening.

Farewell - Keith Reynard

On the 7 November we said goodbye to one of our board members – Keith Reynard. Keith joined the board in March 2022 shortly after relocating to Leopold. His wealth of experience especially in environmental and sustainability practices, made Keith a wonderful director of Leopold Community Enterprises. We thank him for his time and dedication to the company and wish him and his wife a wonderful retirement.



Part of the team

Leopold Community Enterprises Limited is a franchisee of Bendigo Bank and operates the locally owned Community Bank Leopold.

Expressions of interest are now being accepted for the voluntary position of Director. This is an exciting opportunity for a likeminded person to join the voluntary Board of Leopold Community Enterprises Limited.

As a director you will be motivated, well organised, self-directed and community orientated. You'll support and drive the company's strategic direction, goals and objectives to have a real say in the future direction of the branch and community.

For more information or to apply, call Bronwyn on 0477 300 685 or email bendigoleopold@gmail.com.

Leopold Community Enterprises Limited

Our community investments

During 2024 we have committed to the following projects totalling \$276,430.45. This is a significant amount of money invested into our community in one year. This is some of those supported.

Leopold Hall

Leopold Pickleball Club

Leopold Sportsmans Club (Golf & Bowls)

Moolap Tennis Club

Leopold Men's Shed

Leopold Football Netball Club

Leopold Lakers Basketball Club

Leopold Community & Learning Centre

Lions Club of Leopold

Lions Club of Leopold

Leopold Lakers Basketball Club

Live Love Leopold

Bellarine Lakes Golf Club

Allanvale Preschool

Club Italia

Leopold Fire Brigade (CFA)

Leopold Kindergarten

Leopold Little Athletics

Leopold Playgroup

Leopold Cricket Club

Leopold Primary School

Leopold Angling & Aquatic Club

Leopold Tennis Club

Moolap Tennis Club

Friend in Me

St Vincent de Paul

Australian Decorative & Fine Arts Society

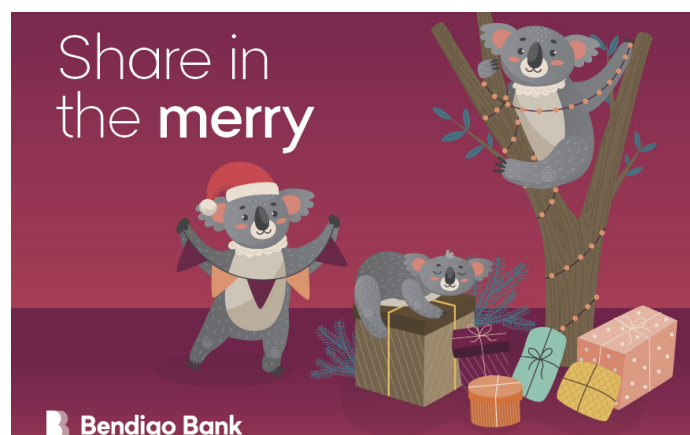
Barwon Health Foundation

To continue this great work, we need you to spread the word. We need you and everyone you know to use the Bendigo Bank services provided at Community Bank Leopold.

Happy holidays

During the festive season, Community Bank Leopold will be closed for the public holidays of Christmas Day (25 December), Boxing Day (26 December) and New Years Day (1 January) but will operate as normal all other business days.

For any enquiries from the community or shareholders, please be advised that Bronwyn (Executive Officer) will be on leave from 25 December, recommencing work on Monday 6 January. We apologise in advance that there may be a delay in responding to emails and phone calls over this time. On behalf of the staff of Community Bank Leopold and the Board of Leopold Community Enterprises, we wish you and your family a wonderful Christmas and safe new year.



Talk to us today

Community Bank

Leopold

22 Dorothy Street Leopold

P 5250 1057

E leopold.mailbox@bendigoadelaide.com.au

bendigobank.com.au/leopold

We're open:

9.30am - 4.00pm Monday to Thursday

9.03am - 5.00pm Friday

 @CommunityBankLeopold

Directors

Kylie Clayton, Paul Madden, Bronwyn Shearer, Ramona Browne, Michelle Jones, Kerrie Napoli, John Leach and Tiffany Quick.

Leopold Community Enterprises Limited

For all shareholder enquiries contact Bronwyn on

0477 300 685 or bendigoleopold@gmail.com

ABN 39 133 061 800