



Community  
Enterprise  
Foundation™  
2021 Yearbook



# Contents

---

3	From our CEO
4	Funding Themes
4	2021 Financial Year Snapshot
4	Supporting future generations with tertiary and TAFE study
5	Fundraising for a cause
9	Our partners - Lendlease
12	Bushfire recovery
24	Our Community Bank partners
29	Bendigo Bank Social Investment Grants Program

---

## Acknowledgement of Country

Community Enterprise Foundation work is conducted on what was and always will be the land of the Aboriginal and Torres Strait Islander people.

Our head office is located on Dja Dja Wurrung land and our partners donors, projects, grant recipients and scholarship awardees are in many parts of the Country.

We acknowledge the traditional custodians of these lands and pay our respects to Elders past, present and emerging. We acknowledge the many Aboriginal and Torres Strait Islander peoples who have made an important contribution to this land and community and continue to do so.



## Front cover

A Community Enterprise Foundation NSW Bushfire Grant assisted young people from BackTrack to help farmers by repairing fences affected by both flood and fire. BackTrack Youth Works is a social enterprise offering intensive support to prepare youth for independent employment.

# From our CEO

The past two years have been undoubtedly unprecedented and we have all displayed a great amount of resilience, spirit and determination in the face of many challenges. No one could have imagined the pandemic, lockdowns, isolation, and fluctuating economy would continue throughout 2021.

While the challenges of the pandemic varied across the country, the spirit seen in our communities and individuals was undeniable, as we faced events never seen before.

The pandemic has highlighted the importance of giving, and the resilience of the not-for-profit sector and its people. It is this sector that has risen to meet the needs of communities and individuals while itself pushed to the brink with limited funding, reduced resources, and organisational capacity issues.

We have heard countless stories of organisations facing challenges throughout the pandemic. From Foodbank facing long queues and struggling to meet demand, to Lifeline answering a record number of calls, to the Red Cross feeling the impacts of lockdowns as their blood donations dwindle. Not-for-profit organisations are the backbone of this country and it's important we continue to support them in making positive, impactful change to society.

We at Community Enterprise Foundation and Sandhurst Trustees, the Foundations Trustee, feel very fortunate to be able to play a role in strengthening our communities and supporting their resilience. In 2021 we ran appeals to support both natural disasters and COVID recovery, receiving \$1.3 million in donations. We have granted \$23.8 million to communities across the country through our partners and Community Bank network, and we continue to support future generations through our scholarship program, this year hitting just over \$10 million in scholarships for more than 1,150 Australian students.

Sandhurst Trustees have built a wealth of knowledge over the 130 years spent administering grants and trusts, and look forward to continuing to work with our donors and partner communities. The strong relationship between The Foundation and Sandhurst Trustees ensures a commitment to governance that allows the Foundation to thrive and gives confidence to donors that decisions around donor funds have clear objectives, involve the voice of those in the community, and are subjected to rigorous attention to government and regulatory requirements.

The Foundation is fortunate to be part of both the Bendigo and Adelaide Bank and Sandhurst Trustees family. Together, we take a community-led approach to support the social fabric of communities across Australia through facilitation and delivery of grants, scholarships, appeals, partnerships, and other funding. With Sandhurst Trustees, Bendigo and Adelaide Bank, and our partners, we understand that the work we do to strengthen communities and provide them opportunities to thrive is equally about the journey, as it is the destination, and we look forward to continuing this journey for many decades to come.

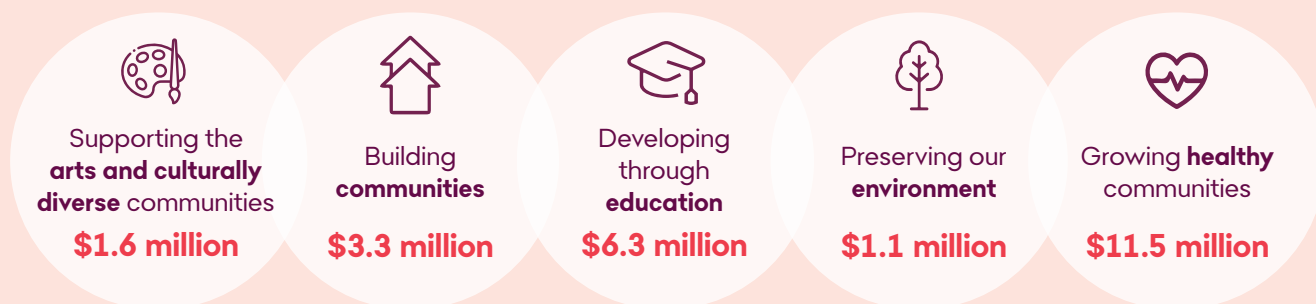
**David Impey – CEO**  
Community Enterprise Foundation™







## FY21 Highlights



## Our funding themes in 2021



## 2021 Financial Year snapshot

 INVEST IN COMMUNITY		 TOTAL PROJECT VALUE		 DONATIONS & CONTRIBUTIONS RECEIVED		 NUMBER OF DONATIONS & CONTRIBUTIONS RECEIVED	
Community Grants	\$9.1m	Community Projects	\$23.1m	Corporate donors	\$12.5m	Corporate donors	3,183
Bushfire	\$14.7m	Bushfire	\$34.8m	Bushfire donors	\$1.0m	Bushfire donors	749
<b>Combined</b>	<b>\$23.8m</b>	<b>Combined</b>	<b>\$57.9m</b>	<b>Combined</b>	<b>\$13.5m</b>	<b>Combined</b>	<b>3,932</b>



# Investing in our future leaders

Education is an important part of life, particularly for young people. But access to education can vary for each individual, with some barriers including financial hardship and access to equipment and resources preventing pathways to tertiary study.

To support students break down the barriers to education, the Bendigo and Adelaide Bank network annually invest in future generations by funding a number of scholarship programs including support for rural and regional students, scholarships for Aboriginal and Torres Strait Islanders, students from disadvantaged backgrounds and students looking to make an impact in the agribusiness sector.

As one of the leading privately funded scholarship programs in the country, the Bendigo and Adelaide Bank Scholarship Program, in conjunction with its Community Bank network and other partners, awarded more than \$1 million to 274 students from across the country in 2021 through a number of programs.

Following the successful 2021 Bendigo and Adelaide Bank Scholarship Program, Bendigo and Adelaide Bank, its Community Bank network and other partners have hit a notable milestone collectively investing more than \$10 million in future generations, providing scholarships to more than 1,150 students across Australia since the programs 2007 inception and strengthening the Bank's purpose of feeding into prosperity, not off it.

The Bendigo and Adelaide Bank Scholarship Program, now in its 15th year, is designed to increase access to tertiary education for students across rural and regional Australia by providing financial support to contribute to the cost of study including accommodation, course materials, travel study equipment and tutoring.

**Darcy Douglas** from Queensland and recipient of the Bendigo and Adelaide Bank Scholarship Program said "This year I will study a Bachelor of Advanced Finance and Economics (Honours) at University of Queensland's St Lucia campus and with this degree aim to use the gift of education toward the betterment of regional communities by becoming a financial leader within them, helping to create more favourable economic conditions and serving as a role model for youth. I hope to create the opportunities and culture necessary so that my children and the generations to follow may live a better life than me".



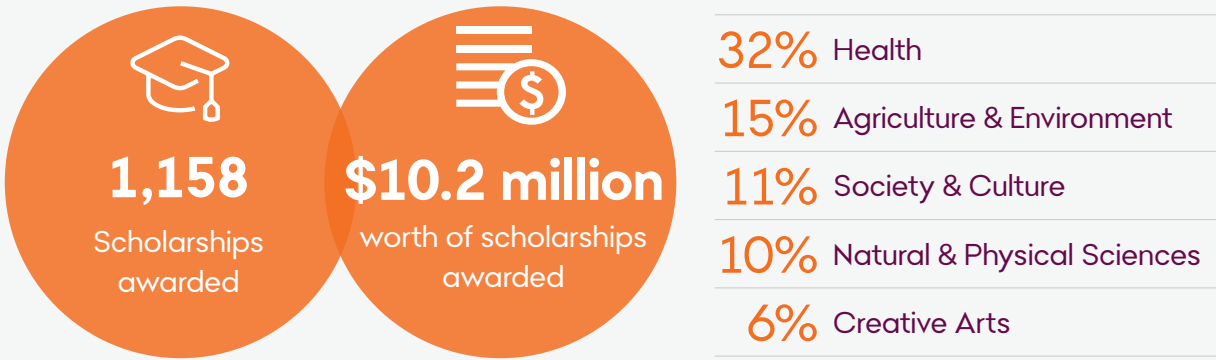
The majority of program funding is provided via the Community Bank network. Community banking is based on a 'profit-with-purpose' model aiming to feed into the prosperity of communities, where revenue is generated by the bank's customers and invested back to the community via programs such as the annual Scholarship Program.

The annual programs of the Bendigo and Adelaide Bank Scholarship Program include,

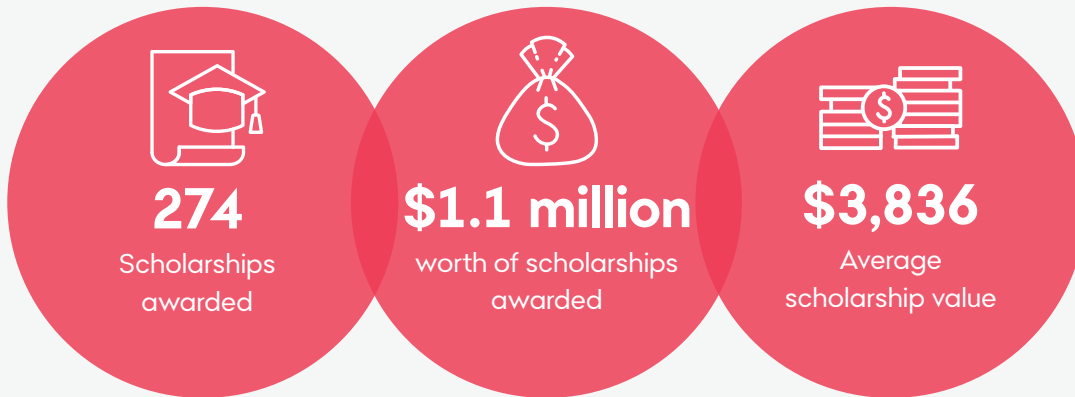
- The Bendigo and Adelaide Bank Scholarship Program for rural and regional students
- The Robert Johanson Scholarship
- Localised programs through our Community Bank network
- The Bendigo Bank Indigenous Scholarship Program
- The Rural Bank Scholarship Program
- The Alexander and Bridget Jones Memorial Scholarship

# Supporting future generations with tertiary and TAFE study

## TOTAL SCHOLARSHIPS (SINCE 2007)



## 2021 SCHOLARSHIPS





# Fundraising for a cause

A huge thankyou must be extended to those who have donated throughout the year. The success of our appeals relies on the generous donations from our Bendigo and Adelaide Bank customers, staff, shareholders, and supporters. Without your generosity many of our projects would not be possible and your donations have a profound impact on the communities you live in.

**\$47m** 2020 Black Summer Bushfire Appeal (\$1m received in FY21)

**\$94k** 2021 NSW Flood Appeal

**\$133k** 2021 WA Summer Bushfire Appeal

**\$81k** 2021 Foodbank Victoria Appeal

## Bendigo Bank Feeding Families Appeal

The Feeding Families Appeal was launched in August 2020 to raise funds for Foodbank Victoria and the growing number of people doing it tough as a result of the pandemic. The appeal encouraged customers to donate through Bendigo Bank branches, or online, with every dollar donated providing two meals for struggling Victorian families. The appeal raised over \$80,000 and allowed the equivalent of 163,818 meals to be provided to those struggling to make ends meet, offering a small sense of comfort and security in extremely trying times.





## Rotary Clubs of Australia Drought Appeal

In partnership with Rotary, the Rotary Clubs of Australia Drought Appeal was launched in October 2019. To support the appeal Great Northern Brewing Co launched the 'Let it Pour' campaign whereby CUB venues held events asking supporters to raise their glasses to the incredible resilience of struggling farmers. Proceeds from these events were then donated to the appeal. In September 2020 more than \$600,000 raised from the appeal was distributed to support farmers in the nine drought declared rotary districts across Australia. Working closely with the local Rural Finance Counselling Services 2,400 debit cards to the value of \$250 each were distributed to help struggling farmers who had been affected by drought.



Photo courtesy of Krystle Wright

## WA Summer Bushfire Appeal 2021

Following the February 2021 bushfires east of Perth, the community once again rallied together to donate to the WA Summer Bushfire Appeal. Aimed at helping locals get back to normal following the devastating fires, the partnership with our local Community Bank Mundaring provided events for locals, offering them the opportunity to share information, connect with their community and build friendships.

Funds from the appeal helped the CWA host a thank you event for the volunteer firefighters, recognising their importance in the community. The event helped boost morale of local volunteers by ensuring they felt appreciated by the communities they serve.

Another grant has helped Parkerville Community Care put on a series of bushfire recovery dinners for those affected by the 2021 Wooroloo fires. Focussing on community resilience and strengthening, the opportunity to meet over a meal, share stories and connect as a community has offered locals a means of self-healing as some continue to deal with the loss of property and damage to surrounds.

## A small grant making a big difference

A \$5,500 contribution to the Golden Dragon Museum in Bendigo assisted with a significant assessment of the collection of over 30,000 objects. This is the first time the collection has been assessed and will offer the chance to better identify and understand the treasures held by the museum, their importance in a broader context, and how these amazing resources can be used to create exhibitions for display at the museum and in tours nationally and internationally. With parts of the collection dating back to some of the city's earliest Chinese settlers, the project offers the opportunity to explore the museum's rich and diverse collection in detail to pin-point exactly why and how it was significant.



# Our partnerships

## Lendlease Foundation

When the Lendlease Foundation was founded in 1983, the objective was to nurture the wellbeing of employees and their families, and support employee's involvement in charitable and community affairs. It was a goal ahead of its time and over the years it continues to prove to be something that makes them special. Today the Community Enterprise Foundation supports Lendlease Foundation in delivering annual open grants program.

## Case study – Delta Therapy Dogs

Delta Society's purpose is to help animals bring joy to people with the aim of improving the health and wellbeing of the community, and vulnerable people, through the evidence-based approach of Animal Assisted Intervention.

A dedicated teams of volunteer Delta Therapy Dogs (a volunteer and their assessed therapy dog) are placed in aged care facilities, hospitals, mental health facilities, schools, and other environments where a friendly therapy dog can help bring joy, build connection, reduce isolation, and improve wellbeing.

Following a year of COVID-19 restrictions, Delta Society looked to build capacity through volunteer recruitment, assessment, and training so that all facilities in Victoria needing a Delta Therapy Dog Team could access their support.

The program aims to reduce isolation and bring joy to beneficiaries by matching them with a suitable local Delta volunteer and their beloved therapy dog.

A \$10,000 grant allowed Delta Society to respond to the overwhelming interest in the service, by investing in their own capacity and increasing the number of volunteer therapy dog teams. This involved a vigorous recruitment selection, assessment by accredited Dog Assessors, and training of volunteers to meet the safety needs of each facility. The investment in their own team will allow Delta Society to continue to respond to the needs of the community and improve the wellbeing of those in need.





## Case study – Little Wings

Little Wings is a not-for-profit organisation providing free, professional and safe flight and ground transport services for sick children in rural and regional NSW, easing the journey and allowing access to specialised medical services and treatments that are only available in major cities or towns.

During the pandemic, the partnering hospitals of Little Wings were unable to provide medical treatment to many seriously ill children from regional and rural NSW due to heightened medical risk of exposure to the virus if they attended the hospital. Further, the additional concern of transmitting the virus from city areas to regional areas and compromising the health of regional communities.

Little Wings responded to this challenge by starting to fly specialist medical teams out to regional and rural locations to deliver pop-up clinics and support seriously ill children in their local area. Subsequently, up-skilling and training local medical teams to continue the support between clinics, enhancing networking and inter-health connections. Ultimately, ensuring the patient has access to the best medical treatment and support possible, regardless of residential postcode.

Lendlease has funded five clinics, transporting a total of nine paediatric specialists from the Sydney Children's Hospital Network. These clinics have been delivered in Dubbo, Tamworth, and Moree; transporting ear, nose and throat specialists; cardiologists; paediatricians and a neurologist. Together they have assisted more than 200 children in receiving essential medical care in their hometown; not only reducing the need to travel into major cities for treatment, but also ensuring continued and consistent access to medical treatment during the COVID lockdowns.

Five regional Healthcare workers also received face-to-face training part of these clinics, building capacity in regional communities, and improving the overall patient experience during the clinic and in-between clinics.

An improvement in overall health literacy and compliance in regional communities has been seen by removing the barriers in accessing specialist medical care and taking the time to build rapport with patients over time, families and patients are more engaged.





## Lendlease FutureSteps

FutureSteps supports established charities and community organisations to deliver shelter and housing projects, including support services.

Grant funding for projects allow organisations the opportunity to find innovative solutions to housing stress and homelessness, ensuring communities continue to prosper into the future.

The Foundation has worked with Lendlease to develop FutureSteps from the beginning. Today we administer targeted and open grant programs to help FutureSteps with the goal to reduce the impacts and causes of homelessness.

### Case study – Foyer Central Social Impact Bond

Through the Lendlease FutureSteps program Social Ventures Australia were funded to make a \$100,000 investment in the Foyer Central Social Impact Bond (SIB) which funds the working capital of the Foyer Central Program; designed to help young people who have been in out-of-home care build their capabilities and capacity to access resources and opportunities, and make positive decisions on the path to independence.

The Foyer Central Program is delivered by Uniting and St George Community Housing, drawing on their collective experience supporting vulnerable young people and providing social and affordable housing.

This program supports young people aged 18-22 in New South Wales who have been in out-of-home care and are experiencing, or at risk of homelessness, by providing them with stable accommodation, tailored support services and strengths-based case management support.

The program operates in purpose-built accommodation located close to the Sydney CBD, universities and training centres. The building has capacity to accommodate 53 young people and it is anticipated that Foyer Central will support approximately 272 young people during the nine-year program.

The effectiveness of the program will be measured by the number of young people supported to achieve successful outcomes. A young person has a successful outcome if they maintain employment, education and/or independent housing over an extended period after graduating from Foyer Central, and do not record a conviction, live in social housing or have a child placed into out-of-home care.

“The first few months of Foyer Central operating has provided a terrific opportunity for all staff to share in the amazing growth – both personally and in terms of program implementation and refinement. For myself it is a privilege to see students coming into Foyer at challenging times in their journey and to be able to observe how quickly they adapt and immerse themselves in both the program and communal-style living.

Many of the students have developed solid friendships in a short period of time. Hearing music, banter, and the sounds of happiness whilst they engage in activities on site provides a great environment in which to work.

The biggest challenge that we have faced is the current COVID-19 lockdown. This has proven difficult for participants, and we have seen a withdrawal from using the communal areas. Staff have adapted activities to include walks outside, workouts and cooking in small groups to encourage students to continue to engage.”

**Paula Thum, Foyer Central Program Manager**





# Bushfire Recovery a Community Led Approach

2021 marked two years since the devastating Black Summer Bushfires.

The disaster had a profound impact on many communities, intensified by the effects of the pandemic, and two years on many are still on the long journey to recovery. Although individuals and communities across the country have been tested immensely over this time, the strength and resilience seen by those affected has been nothing short of remarkable.

We have seen people rally together to recuperate, rebuild and invest in their communities to ensure the future is brighter than ever, and while this is certainly cause for celebration, it is imperative to remember that there is still work to be done.

As ever, the Bank's commitment to disaster recovery remains unquestionably steadfast with \$28.1 million being disbursed since the launch of the bushfire appeal, which saw \$47 million in donations generously pour in from all over the world. These funds have offered impacted communities a beacon of hope with the opportunity to rebuild what was taken from them. Grants from the appeal have helped fortify the fabric of communities, socially and economically, and the community led approach has ensured those affected most have access to what they need when they need it.

Across the nation our bushfire appeal funding has responded to the unique challenges and pace of the recovery journey with local communities determining their different and evolving needs. In Victoria, our strong partnership with the Victorian Government enabled us to act quickly in support of our local communities. This year the Victorian Bushfire Appeal has distributed \$14.7 million to help connect communities, restore the economy, and conserve and re-establish the natural environment.

We know the greatest success for bushfire affected communities will come from ongoing community-driven recovery and rebuilding process, and we have committed to stand shoulder to shoulder with them to support their recovery and prosperity for the long-term.





# Bushfire Recovery

The devastating Black Summer Bushfires had a profound impact on communities across Australia, with many left struggling to rebuild and return to life as normal. In response to the devastation, national and state-based bushfire appeals were set up to support the recovery efforts of impacted communities. Donations from everyday Australians and overseas onlookers rolled in to collectively raise \$47 million, \$28.1 million of which has been disbursed since the launch of the appeal in January 2021.

The Appeal aims to support bushfire affected persons and communities by investing in the recovery, resilience, and capability across impacted communities via the distribution of grants to Eligible Charities and Not-For-Profit organisations endorsed with Item 1 Deductible Gift Recipient (DGR) status for charitable purposes as recommended by the Advisory Committee.

The community-led disbursement strategy focussed on the three phases of; immediate relief, short term recovery and medium to long term recovery with the recognition that recovery is a marathon, not a sprint. The immediate relief phase saw 40% of funds disbursed in direct response to the devastation and was informed by the experience of partners, and our lived experience of natural disasters and response management.

Short, medium, and long recovery is community led and is focussed on resilience and rebuilding, with short term recovery occurring in the year following the disaster and medium to long-term focussing up to 2025 and beyond. A total of 60% of funds will be disbursed across short-, medium- and long-term recovery.

Grants have been provided to eligible charities and not-for-profit organisations to invest in the recovery, resilience, and capability of their communities. These grants will allow these communities the opportunity to rebuild, reconnect and heal.

## Immediate Relief

Informed by our partners' and our lived experience in managing disasters of this nature

## Community Recovery

### SHORT TERM

Informed by local communities

## Community Recovery

### MEDIUM-LONG TERM

Informed by local communities

**Jan – Oct 2020**

Up to 40% of funds disbursed to support Immediate Relief

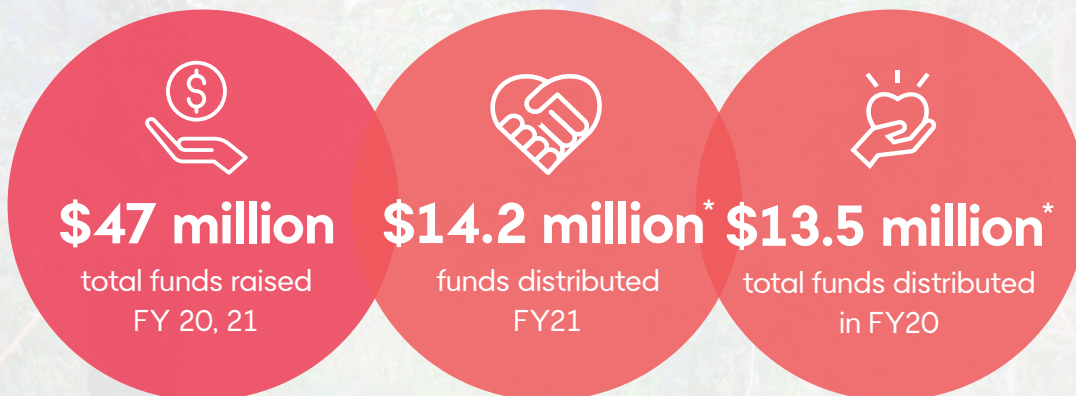
**Jul 2020 – Jun 2021**

Up to 60% of funds disbursed to support Community Recovery

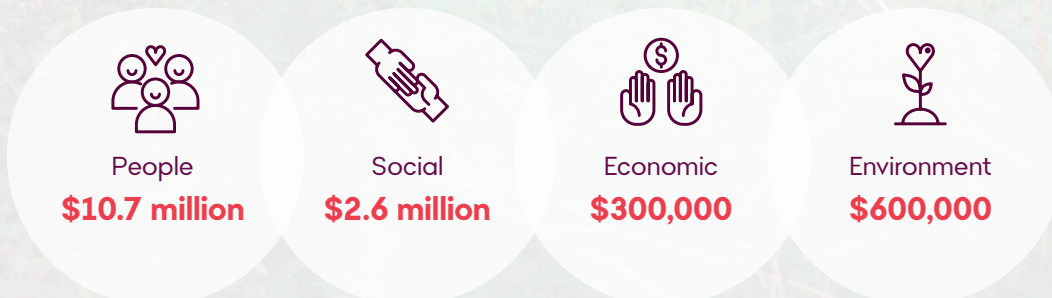
**2021 – 2025 and beyond**



## BLACK SUMMER BUSHFIRE APPEALS FY21



## BUSHFIRE APPEAL PILLARS



*\*Note at the time of publication May 2022 \$42.5 million or 92% of the appeal funds have been distributed*



# Bushfire Community Recovery Grants Program

The Bushfire Community Recovery Grants Program has seen \$29 million disbursed in the community to support the rebuilding of communities most affected. The resilience seen in these communities is inspiring and a testament to the strength of the individuals that make them up. We are proud to have supported these, and many other, communities in their journey towards recovery.

## Backtrack – NSW

BackTrack Youth Works is a social enterprise offering intensive support to prepare youth for independent employment. A \$46,000 NSW Bushfire Recovery Grant supported BackTrack in providing aid to bushfire affected property owners on the mid-north coast. In collaboration with BlazeAid, Disaster Recovery Australia, Mid Coast Connect and Thungutti Land Council over 1100 hours of work went into cleaning properties and repairing and installing new fences which are on boundary lines of properties damaged by both fire and flood. This program provides young people with meaningful training opportunities and the chance to make a difference in fire and flood affected areas.



## FRRR – NSW

The Foundation for Rural and Regional Renewal (FRRR) were provided a grant to assist FRRR expand its Investing in Rural Community Futures program in the Bay and Basin area. Focussing on local organisations and their ability to rebuild and respond to the people they support in fire affected communities; the program offers participants the opportunity to bring their passion and ideas to drive their community. Workshops kicked off in the Vincentia community, with participants saying it gave them the opportunity to meet others to collectively solve a problem. The grant totalling \$600,000, will be distributed in lots of \$150,000 per year over the next four years.





## BlazeAid – NSW

Funds donated to the Bendigo Bank bushfire appeals significantly assisted BlazeAid by funding trailers, equipment, fencing and volunteer camps as they work to rebuild fences and lives in the aftermath of the Black Summer Bushfires. An additional \$20,000 grant funded from the NSW Bushfire Appeal allowed BlazeAid to purchase iPads for volunteers to collect data in real time assisting with vital fence repair and offering insights to further support those in need. The iPads will equip BlazeAid with the ability to measure their impact, setting them up in the case of future disasters.



## Bega Valley – NSW

Social Justice Advocates and the Rotary Club of Pambula have been supported by a \$64,000 grant to produce a series of community events across the Black Summer firegrounds in the Bega Valley. Every event aims to reach a diverse array of groups from local youth, the elderly and LGBTQI+ community with the goal to reduce stress and trauma and bring the community back together.

## Habitat for Humanity – SA

The Cudlee Creek bushfire, which burned in the final week of 2019, destroyed 98 homes, and affected a number of communities in the region. A grant of \$40,000 has helped the Habitat for Humanity South Australia deliver the Gardens of Hope project which will assist residents in rebuilding and replanting their gardens once their houses are rebuilt. The project aims to provide a visual relief from the fire-damaged landscapes and offer a sense of normalcy in the affected communities.





## Kangaroo Island – SA

The Black Summer Bushfires devastated Kangaroo Island and with almost half of the island burnt by the fires, locals were majorly impacted. Lost in the fires were a number of playgrounds, so vital for children and families. A \$50,000 grant matched with a further \$50,000 from Variety SA, will enable playgrounds to be built at Stokes Bay Community Hall and in the community of Parndana. These playgrounds will be built for accessibility which will enable all to enjoy on Kangaroo Island.

With the Island beginning to heal and celebrations returning, a grant from the South Australian Bushfire Appeal, our funding partner The Australian Lions Foundation and donations from Rotary Australian Districts, Junction Australia and the Australian Red Cross supported the success of The Kangaroo Island ANZAC Day Bushfire Resilience Concert. Headlined by legendary singer John Schumann the concert provided the fire torn island with an opportunity to come together and move forward as one. With many locals on the long road to recovery still, the event allowed them the chance to take break and celebrate how far they have come.



## Bushfire Kids Connect - SA

Founded by nine-year-old Sebastian Ascott and his mother, Carly, Bushfire Kids Connect supports the wellbeing of children and families impacted by bushfires. Connecting with more than 100 families across SA affected by the devastating bushfire seasons over the past two years, Bushfire Kids Connect aims to tell their stories in their voice. A grant of \$62,975 from the SA Bushfire Appeal has helped Bushfire Kids Connect develop an Australia-first pilot school program to deliver education in bushfire awareness and wellness in time for the upcoming fire season. The pioneering program will be trialled in ten South Australian primary schools and aims to help students understand bushfires and their impact by educating them through a bushfire awareness and wellness-themed challenge course using tool Makers Empire. A number of teachers from each school will also attend a professional development course as part of the program. Once the pilot is complete the program will be expanded into regional remote schools to empower children with knowledge in the event of future fires.

## Stanthorpe Region – QLD

The Stanthorpe region was hit hard by bushfires in September 2019 brought about by severe drought, and further devastation occurred when the pandemic hit in 2020. Despite the hardship faced by the rural QLD town, locals came together to rebuild their community and, with assistance from the Queensland Bushfire Appeal, were able to begin to move forward to restore a number of crucial community events and support the journey of recovery. The region received a total of \$171,380 dollars in grants supporting four community identified initiatives including the Stanthorpe Show, the Stanthorpe Artists Festival, Snowflakes in Stanthorpe and the Rotary Club of the Granite Belt Community Catering Trailer and Community Shed.



The Stanthorpe Show had the privilege of being the first agricultural show held for the Queensland show year, assisted by a \$40,000 grant. The show was a sign of a community rebuilding offering locals an opportunity to meet up and promote the important agricultural sector.

The effects of the bushfire have been felt across Stanthorpe, evident by an increase in student and family needs seen by Canungra State School Chaplain, Katie. The loss of properties, evacuation and school closures all contributed to a rise in anxiety, stress and mental health issues and a need for support has been recognised in the community. With a \$47,000 grant ongoing Chaplaincy services will be provided to support the social, emotional and spiritual wellbeing of the school's children, staff and families. Katie said "The combination of the destructive summer bushfires and COVID 19 has had a major impact on our community. Children and families are dealing with a lot; the rise in anxiety, financial stress and family breakdown. This funding has increased my ability to support our school children and families in need. I can increase the number of group programs designed to equip students and families with the tools needed. Teach them how to cope with challenges and promote good mental health and wellbeing".

## Wairewa Hall – VIC

The firestorm that swept through the Wairewa community in 2019 resulted in many losses including 11 homes, hundreds of head of stock, and millions of dollars of farm infrastructure and equipment. On the night of the fire 30 people sheltered in the Wairewa Hall and it became a community relief centre in the weeks following as donors and agencies arrived to assist. A grant from the Victorian Bushfire Appeal will allow vital accessibility and safety upgrades to the building, allowing it to be enjoyed by the entire community for years to come. Upgrades to the hall will provide greater community confidence knowing that if devastation occurred again; the town is well equipped.

## Rural Women Online Program – VIC

The Dugdale Trust for Women and Girls will use a grant of \$165,000 to deliver the Rural Women Online program. Working with Victorian Women's Trust the program will fast track training and technology support to ensure women impacted by bushfires living rurally and regionally are equipped to connect to essential online services such as maternal care, reproductive services, violence prevention and telehealth.



## Mallacoota Skate Park – VIC

The skate park at the heart of Mallacoota was much loved but due for a much-needed upgrade, with equipment aging and accessibility issues leaving some riders sidelined. A grant from the Victorian Bushfire Appeal will see the park re-developed as a community recreation hub with equipment replaced and accessibility addressed to include wheelchair access, young skaters, and riders of all abilities. The re-development will offer a place for locals to hold events, local artists will be able to display their work and after a tough year the park will offer the town a symbol of community pride and recovery.





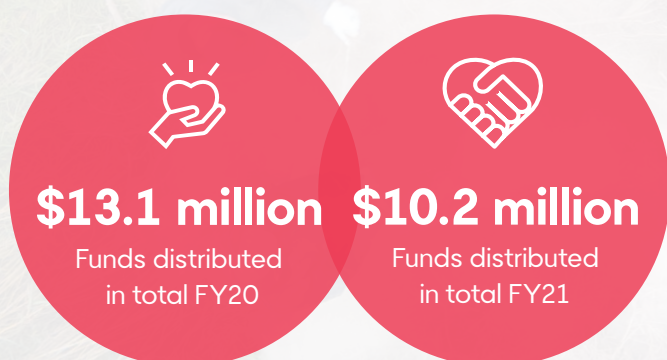
## Victorian Bushfire Appeal

The Victorian Bushfire Appeal was established in partnership with The Victorian Government in response to the devastating bushfires impacting the state. The goal was to raise and distribute funds to support those communities impacted most and it saw people from all across the world dig deep to help ease the devastation faced. While nothing could ever replace the incredible loss faced, the funds donated were in support of the rebuilding of lives. A thank you must be extended to the members of The Victorian Bushfire Advisory Panel, chaired by former Victorian Deputy Premier Pat McNamara, who offered their expertise to recommend how funds were distributed in support of the community.

- The Honourable Patrick McNamara, Chair
- David Impey
- Pam White
- Sue Cunningham
- Natalie O'Connell
- Joanne Duncan
- Carmel Flynn
- Lee Miezis (former member)

Thanks also to the dedicated team at Windermere Child and Family Services who administered the initial bereavement payments to those who lost loved ones in the Victorian Fires. Windermere have continued to work closely with affected residents to ensure housing payments were made to assist with rebuilding of homes, a task that has been made significantly harder with the challenges of COVID-19.

### PROVIDED RELIEF AND RECOVERY FOR BUSHFIRE AFFECTED COMMUNITIES



*\*Note at the time of publication May 2022 all \$37.2 million raised for the Victorian Bushfire Appeal has been distributed and the appeal closed*



# National Bushfire Appeal

## Education and Workplace Grants

The Youth Education and Workplace Pathways Grants were offered in support of the studies of young people living in bushfire affected areas. A \$2 million contribution from the Bendigo Bank National Bushfire Appeal, matched with a further \$2 million from The Salvation Army funded the grants in support of the educational development and workplace aspirations of these young people.

One worthy recipient, Tom, received a grant allowing him to purchase a laptop to undertake his online studies after a tough 2019-2020 fighting bushfires. When Tom was 14 years old, he watched local firefighters save his family farm from a fire in Braidwood, NSW. With a bloodline of firefighters, Tom was inspired to sign up with the NSW Rural Fire Service the following year and today he continues on the important legacy. Working for 69 days straight on the frontline in the bushfires in 2019/2020 took a toll

on Tom, as he suffered smoke inhalation in Armadale and was then trapped for 10 hours surrounded by fire in Braidwood. An previous rugby injury to his hand caused further complications and eventually forced him into hospital for a hand fusion. This unfortunately meant that Tom lost income and was forced to delay his start to university. A grant allowed Tom to purchase a laptop to begin his studies online with a dream to become a commercial property developer firmly in his sights. "I was so relieved and grateful when I was given the grant," Tom said. "Being given this support helps me so much and will play a huge role in my studies." By March 2021, all funds had been distributed, with The Salvation Army and Bendigo Bank awarding over 1,300 grants to people aged between 15 to 25 years in NSW, Victoria and South Australia.





## Rotary International D9800 – Australian Bushfire Disaster Appeal

The Rotary Clubs of Australia Bushfire Appeal has supported a number of communities impacted by the devastating bushfires. After providing some of the immediate needs to the community, including temporary accommodation and shelter for remaining possessions, The Appeal has continued to support the ongoing recovery including a number of grants to support the mental health of those severely affected.

## Griefline Community and Family Services - G'Day Project

A \$100,000 grant to Griefline Community and Family Services was provided for the G'Day Project which seeks to provide relief, support, education and connection to bushfire survivors, first responders and individuals experiencing loneliness and isolation. Through an outreach program including phone calls, guidance through recovery and a digital support platform, the G'Day Project aims to encourage those affected to connect, learn and rebuild.

## Rotary Action Group for Family Safety Inc – Healing the Hurt Fund

A \$100,000 grant will assist the Trauma Recovery Network Australia to roll out three projects providing treatment for mental health issues within bushfire affected communities based on EMDR methodology.

The project includes a professional mental health assessment to identify and provide treatment for patients with acute stress and PTSD, training in early intervention and disaster specific treatment for local therapists already familiar with EMDR treatment; and training in EMDR and associated trauma treatments as recommended by the World health organisation for local mental health professionals.

The project has already completed EMDR training with first responders in Myrtleford and Bairnsdale and training with Gateway Health caseworkers.







## Bushfire PTSD Equine Therapy Relief and Support

In partnership with Rotary over \$100,000 has supported Equine Therapy Learning Australia in the delivery of mental health emergency response for individuals and families most seriously affected by PTSD as a result of the bushfires in the South Coast region communities of Southern NSW and in Mallacoota in Victoria.

Equine assisted somatic therapy is an approved method of trauma-informed practice with feedback provided by both horse and practitioner guiding and coaching the participant to learn effective response management mechanisms, and build new capabilities for self-regulation, restoring a sense of wellbeing and empowerment.

# Our Community Bank partners

Community Enterprise Foundation was established in 2005 to provide the Community Bank network and communities in Australia access to a Foundation structure.

Contributing to the success of our partners helps their communities prosper sustainably. We are proud of the Community Bank companies we partner with and of Bendigo Bank, for caring about its people and the communities we live and work in.

## The Ready Foundation – Community Bank Clifton Hill

The Ready Foundation was established by AFL SportsReady and aims to assist in relieving poverty, suffering, distress, or misfortune experienced by Aboriginal and Torres Strait Islander young people and other disadvantaged youth. In 2020, Community Bank Clifton Hill provided a \$20,000 grant to offer a traineeship opportunity for a young Aboriginal person in partnership with The Ready Foundation.

The traineeship enables an individual to undertake a nationally recognised qualification while undertaking paid, on-the-job training, providing the perfect opportunity to launch a successful career.

Tayah Quayle, a proud Aboriginal woman, was lucky enough to be offered the traineeship, undertaking a Certificate IV in Sport Development while working as an Indigenous Support Officer at Thornbury Primary School, a role that sees her connecting with indigenous youth.

“In my role I help disengaged Indigenous kids re-connect with their classes, their culture and themselves through one-on-one time and through their love of sports,” said Tayah.

I feel really grateful to be given the opportunity to work at this amazing school and it's all thanks to this traineeship opportunity,” she added.

## Deloraine House – Community Bank Deloraine & Districts

The Deloraine House garden is a space for everyone. Regularly visited by volunteers, school groups, aged care centres and NDIS support centres, the garden had seen some wear and tear in its time. A grant of \$11,321 allowed the Deloraine House the chance to upgrade the garden to accommodate those with a disability or mobility issues to create a more inclusive and welcoming space for all to enjoy. The raised garden beds, smoother paths and solar powered water pump will ensure the space is both functional and sustainable with permaculture principles considered and used where appropriate. A driveway will allow buses to drive directly into the garden to accommodate those with mobility and access needs, the garden can then be easily navigated in a walking frame or wheelchair. Raised garden beds can be easily accessed and worked on, offering an activity for all participants to enjoy.

The garden is a therapeutic landscape used for mental health, physical exercise and as a space to lower stress and offers a place to connect participants to other services in the Deloraine House. It provides a place to connect, learn, participate and belong.



## Go Girls Foundation Inc – Community Bank Clifton Hill

The Go Girls mission is to connect, honour and celebrate women by empowering them through events, workshop programs, coaching and industry links. Women from all backgrounds, ages and experiences are encouraged and supported to grow through the programs they offer.

A \$10,000 grant from Community Bank Clifton Hill funded a participant to attend their work ready program, a five-month intensive workshop program consisting of a series of workshops focussing on job skills, financial planning, personal development, and counselling. The workshops encourage participants to develop personal relationships and assists those who are socially isolated create meaningful connections.

COVID didn't stop the program from going ahead and fourteen women were able to take part in 2021. Coming from diverse backgrounds, experiences and age ranges the women all looked forward to finding a job and starting a career leading them into a new life. Although restrictions meant the workshops couldn't occur at the library as per normal, the women worked hard to secure alternate venues and were motivated and focussed to complete the five-month program. With a month to go in the program, two of the participants had already secured employment, two had enrolled in study and many more had secured interviews. This is a testament to the hard work of the women and their determination to succeed.







## St Kilda Police & Youth Club Inc - Community Bank Windsor

An upgraded minivan was needed to transport young people, volunteers, and staff to and from the youth programs offered by St Kilda Police & Youth Club. While the previous vehicle served them very well for over ten years, a new twelve-seater van offered a safe and reliable mode of transport for the fourteen youth programs run by the organisation.

A grant of \$20,000 from Community Bank Windsor allowed the club to purchase the MAC Van giving them the capacity to deliver youth programs to those in need of support. The van assists in carrying

sports equipment to allow those in public housing estates to play sports and participate in activities, with up to 30 young people joining in at a time. These programs would not be possible without the MAC Van which allows up to 10 people at a time travel for volunteering and recreation programs. Although the MAC Van has only been with the club for a short period of time, they have already been able to travel to the Dandenong Ranges for their Holiday Program and to the Grampians for a 4-day youth camp.



## Wintringham Housing Limited – Community Bank Heathcote

The Heathcote community was in dire need of appropriate affordable housing to support local elderly residents in an ageing community. In recognition of this local challenge the Heathcote & District Community Bank partnered with Lions Club of Heathcote, Heathcote Health, City of Greater Bendigo and Wintringham Housing Limited to contribute to the Heathcote Community Housing for the Elderly project. This project is building an additional four housing units and a \$49,000 contribution from the Heathcote & District Community Bank assisted in finalising the development with fencing for the units, connecting carports and roller blinds.

All residents were elated with their new homes with one resident saying “I have to remind myself that this is my home for life, and I am so thankful”.

## EdConnect – The School Volunteer Program – Community Bank Bayswater

COVID-19 had a massive impact on the education sector and EdConnect was no exception. With an aim to place a minimum of five volunteers for a minimum of one hour per week in each of their 250 member schools, EdConnect work tirelessly each year to recruit, screen and train each of their volunteers. The WA COVID-19 restrictions, however, meant that volunteer training could not occur face to face, meaning EdConnect had to rapidly pivot to develop online training modules. A \$5,390 grant Community Bank Bayswater meant that EdConnect were able to continue to deliver their content and ultimately allowed their volunteers the opportunity to continue to make a difference in these unprecedented times.



## West Coast Youth and Community Support – Community Bank Cummins and Community Bank Port Lincoln

Mentally Fit EP is a mental health program run by West Coast Youth and Community Support since 2016 in the Eyre Peninsula in South Australia. The primary objective of the project is to work towards creating a community where people have the skills to support themselves and each other. Mental health concerns are an ongoing issue in the Eyre Peninsula community affecting everyone directly or indirectly and services available mainly target urgent needs rather than encourage prevention. West Coast Youth and Community Support aim to offer an alternative approach and the Mentally Fit EP project takes a proactive approach to the issue with the belief that each person has the power to positively influence their own mental wellbeing. The project focusses on three aspects- raising awareness of individual mental health, offering an accessible program to learn to take charge of individual mental health and increasing the knowledge in the community of where to go for support.

During COVID, like many others, the team had to pivot online training and breakout rooms to continue to connect the community in a time when people didn't feel in control and were feeling isolated. Online access meant that the program was able to continue to support the community in a time of need like no other. Community Bank Cummins and Community Bank Port Lincoln continue to be great supporters of this important initiative in the community.





## Illawarra Women's Health Centre – Community Bank Oak Flats & Shellharbour

The number of domestic and family abuse client contacts at the Illawarra Women's Health Centre increased 2.5 times since January 2020, as did the number of women presenting in crisis for emergency support. The number of women presenting as homeless due to DFV has increased three-fold and phone enquiries are up 55%. Women are presenting with increased complexity of needs, as well as increased intensity and frequency of violent incidents. With demand for support at an all-time high, the Centre faced challenges meeting the need for support, with the waitlist for counselling eventually exceeding three months; a devastating and dangerous outcome for many women in crisis. A \$20,000 grant from Community Bank Oak Flats and Shellharbour allowed the centre to fund a legal case worker, significantly boosting the capacity to deliver timely and adequate support to women in need. Focussing on providing legal casework support, additional front-line support and brokerage for clients, new case worker has had a significant impact and offered assistance in a very real way.

## 2020 Sarina Community Bank Community Recovery Program – Community Bank Sarina & District

In 2020 Community Bank Sarina identified a need in the community for additional assistance, resources, and upskilling from the COVID pandemic. In response to the increase in needs, they launched Community Recovery Program which offered funding for community groups in need.

## Mudth-Niyleta Aboriginal and Torres Strait Islander Corporation

A grant of \$5,000 allowed Mudth-Niyleta to upgrade their computer system to continue to provide support to the indigenous community, grow stronger through housing, health services, education, employment programs and to advocate for fairness and opportunities. It also allowed them to support the greater Sarina community through the delivery of community based human service activities of Aged Care and Housing.

## Queensland Country Women's Association

Queensland Country Women's Association (QCWA) has a long history of empowering and inspiring women through friendship, education, connection, and advocacy. During the pandemic a need to ensure connections could still be made was identified along with the to upskill members to ensure they could take advantage of technology and remain in contact. A grant of \$4,515 allowed the QCWA to provide social media, email software, zoom, PC and Microsoft Office training to their members; empowering them to use their devices without fear and encouraging them to remain connected in a time where many were physically isolated.

# Bendigo Bank Social Investment Grants Program

Bendigo Bank's Social Investment Grants Program is dedicated to supporting not-for-profit organisations in creating impact in their local communities. Each year, the program's committee (made up of representatives from the sector and Bendigo Bank) selects a theme to address a pressing social need.

The program helps support the not-for-profit sector's immense need for more funding, especially given the challenges 2020 presented from bushfires, droughts, floods and COVID-19, and the critical role the sector plays in strengthening communities.

In 2020, eight not-for-profit capacity building projects were announced as the recipients of Bendigo Bank's Social Investment Grants.

From restoring the UNESCO World Heritage Daintree Rainforest in Far North Queensland to coordinating emergency food relief in regional Victoria, this year's grant recipients will be making a profound impact on their communities and share in \$288,000 in funding.

Cathie Steele, Chair of the Bendigo Foodshare board, said their grant had the potential to change the landscape for the provision of emergency food relief.

"The grant will enable Bendigo Foodshare to take our online Community Food Pantry service from a single provider system to a multi-agency food relief ordering service. Multiple agencies will be able to seamlessly coordinate to better meet the emergency food needs of their community through natural disasters and pandemics," Ms Steele said.

The Social Investment Grants Program is administered in conjunction with the Community Enterprise Foundation and has provided over \$1.45 million in grants to the not-for-profit sector since 2014.





# 2020 Social Investment Grant Recipients

## RECIPIENTS OF A \$50,000 GRANT

---

### **Giant Steps, VIC**

Project: establish an adult autism services program to provide young adults with autism access to vocational education, leisure and recreation.

---

### **Bendigo Foodshare, VIC**

Project: develop a cloud-based software system to support food relief ordering from multiple agencies in a flexible, responsive manner during 'normal' and emergency situations.

---

### **Welfare Rights Centre, NSW**

Project: work with Think Impact to develop a tailored impact measurement framework and educate staff on how to measure and effectively communicate impact.

---

### **Rainforest Rescue, QLD**

Project: a new Nursery Project Manager to oversee the development of a new tree nursery that will grow ten times as many seedlings and produce one million rainforest trees for the Daintree within 5-10 years.

---

## RECIPIENTS OF A \$25,000 GRANT

---

### **Australian Community Philanthropy, VIC**

Project: a library and templates to assist directors, staff and volunteers with governance, risk and compliance, and quality assurance management, as well as a platform to provide professional development, mentoring and networking opportunities.

---

### **Milk Crate Theatre, NSW**

Project: develop a social enterprise to deliver public art and community amenity in partnership with disadvantaged communities and property developers. The project will also include a rebrand and expects to be self-funding by the end of 2021.

---

### **Central Coast Community Women's Health Centre, NSW**

Project: develop a client management system to improve client experience and support good governance, compliance and reporting leading to improved wait times and more sustainable pathways for service growth.

---

## RECIPIENTS OF A \$13,000 GRANT

---

### **Heart & Soul Community Group, SA**

Project: update to the online ordering system to respond to increased online demand unable to be served by current systems. The new customised platform will create efficiencies in ordering and delivering and ultimately achieve the vision of no food going to waste in South Australia.

---







# Community Enterprise Foundation™

1300 304 541

[communityenterprisefoundation.com.au](http://communityenterprisefoundation.com.au)

Grants and appeals outlined in this document are administered by the Foundation and allocated from the following trusts:

Community Enterprise Foundation (DGR)ABN 69 694 230 518

Community Enterprise Charitable Fund (TCC)ABN 12 102 649 968

Youth Foundations Victoria (YFV)ABN 47 853 957 737

