



COMMUNITY ENTERPRISE FOUNDATION™ | 2022 Yearbook

Building resilience and strengthening communities

 **Bendigo and
Adelaide Bank**



Front cover

Tricia Hiley from the Mallacoota Sustainable Energy Group. Tricia is featured in the Bendigo Bank video 'Beyond the Fire'.

Contents

-
- 3 From our CEO

 - 4 FY22 highlights

 - 5 Community recovery from natural disasters

 - 6 Bushfire recovery

 - 8 Beyond the fire

 - 10 After the fires

 - 14 Rural women online

 - 16 Responding to floods

 - 17 Investing in our future leaders

 - 20 Empowering women and girls

 - 22 Small towns are making a big difference
-

Acknowledgement of Country

Community Enterprise Foundation work is conducted on what was and always will be the land of the Aboriginal and Torres Strait Islander people. Our head office is located on Dja Dja Wurrung land and our partners, donors, projects, grant recipients, and scholarship awardees are in many parts of the Country. We acknowledge the traditional custodians of these lands and pay our respects to Elders past, present, and emerging. We acknowledge the many Aboriginal and Torres Strait Islander peoples who have made an important contribution to this land and community and continue to do so.



From our CEO

Since our establishment over 18 years ago, Community Enterprise Foundation has been committed to investing in the development of vibrant and sustainable communities, rich in culture, resources, people, and spirit.

After three years of bushfires, a pandemic, and floods, the meaning of our work has only grown. We have observed a great amount of resilience, determination, and grit within our communities as yet another year of the Covid-19 pandemic has exacerbated the deep-seated inequalities in our society. Alongside our partners, we strive to assist those disproportionately affected and distribute funds into communities where they are needed the most.

For example, funding projects that address digital literacy for rural women and assist women who are experiencing the trauma of domestic violence has been essential.

Three years on, the Black Summer bushfires also continue to profoundly impact individuals and communities. Many are still on the long journey to recovery as the after-effects have been intensified by the pandemic.

Through our lived experience of the bushfires, we have seen that community-led recovery leads to the greatest success. Therefore, we continue to support bushfire recovery and prosperity for the long-term.

We have demonstrated our commitment through the distribution of \$43 million to capacity building, resilience, and recovery projects that are designed to rebuild and strengthen the social fabric of the community.

Our customers, partners, and donors have all rallied to support communities experiencing continued natural disasters, with an appeal raising funds for those devastated by floods across Queensland, New South Wales, and more recently Victoria. These initial funds have supported immediate relief projects. In addition, through our partnership with Rotary International, community-led consultations will continue to enable flood resilience grants, which will provide further assistance in the short to medium term flood recovery.

As the Corporate Foundation of the Bendigo and Adelaide Bank, Community Enterprise Foundation has built a strong relationship with its trustees, Sandhurst Trustees, which ensures a strong commitment to the Foundation's governance.

This allows the Foundation to thrive and gives confidence to donors that decisions around their funds have clear objectives. They involve the community's voice and are subjected to rigorous attention to government and regulatory requirements.

Our retiring Sandhurst Trustee chair, Jenny Dawson, has led the interests of the Foundation during her board leadership roles and we thank her for her commitment to creating a strong and lasting legacy. We also welcome the new Chair of Sandhurst Trustees, Vicki Carter, whose experience in banking, insurance, and wealth management will bring enthusiasm, diligence, and dedication into the role. The Foundation is in safe hands and continues to support the needs of our communities.

We will continue to focus on providing communities with the foundation to thrive. We strive to create a positive impact by collaborating and investing with our community partners across Australia.

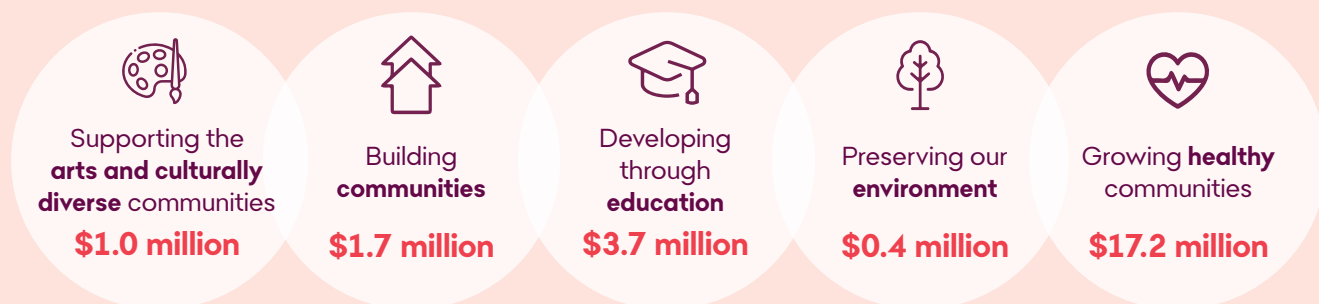
For now, I leave you with a snapshot of our journey so far. Most importantly, I invite you to read the stories of the people who are leading their communities through recovery towards a brighter and more resilient future.

David Impey – CEO
Community Enterprise Foundation™





FY22 highlights



Our funding themes in 2022



2022 Financial Year snapshot

 INVEST IN COMMUNITY		 TOTAL PROJECT VALUE		 DONATIONS & CONTRIBUTIONS RECEIVED		 NUMBER OF DONATIONS & CONTRIBUTIONS RECEIVED	
Community Grants	\$9.6m	Community Projects	\$31.6m	Partners and public	\$11.4m	Partners and public	785
Disasters	\$14.4m	Disasters	\$15.7m	Appeals	\$1.0m	Appeals	1,828
Combined	\$24.0m	Combined	\$48.3m	Combined	\$12.4m	Combined	2,613

Community recovery from natural disasters (bushfires, floods, and drought)

FY22 NATURAL DISASTER PILLARS*



People

\$9.1 million

Ensuring vital support is made available to impacted communities, and the people within them, by linking to programs and services that assist with their recovery and development



Social

\$4.9 million

Recognising the importance of building social capacity and engagement in the recovery of impacted communities and their residents



Economic

\$300,000

Supporting programs and events that assist with the economic restoration of communities, by helping to rebuild their recovery and resilience



Environment

\$100,000

Support the conservation and re-establishment of the natural environmental

BLACK SUMMER 2019/20

FUNDS RAISED AND DISTRIBUTIONS



\$48 million

total funds raised
FY 20, 21, 22



\$13.5 million

funds distributed
FY20



\$15.3 million

total funds distributed
in FY21



\$14.4 million

total funds distributed
in FY22

* Many of our projects overlap and impact all of our natural disaster pillars, however we have chosen to focus on the primary pillar.

Enabling communities to take the lead in bushfire recovery

While the world's attention turned to Covid-19, we have continued to work with bushfire affected communities to make sure that they're getting the support they desperately need.

The arrival of a global pandemic was tough on everyone. However, it only compounded and exacerbated the hardships faced by locals in bushfire impacted communities.

Now more than ever, it's important that we continue to support their recovery and rebuilding efforts. Therefore, the Foundation's Bushfire Appeals have distributed \$14.4 million to help connect communities, restore the economy, and conserve and re-establish the natural environment this year.

Across the nation, our bushfire appeal funding has responded to the challenges and pace of the recovery journey with local communities determining their unique and evolving needs. In Victoria, our strong partnership with the Victorian Government has helped us to assist with the enduring efforts for bushfire affected communities.

Through a community-led approach, \$13.2 million has supported local community foundations to deliver recovery funding to the Alpine, East Gippsland, and Towong shires over the next ten years. Community Enterprise Foundation, together with Border Trust and the newly formed East Gippsland Community Foundation will continue to distribute funds to support the medium to long term recovery needs of bushfire affected communities.

Community foundations are independent, community-owned organisations that are established for community benefit and operate in perpetuity. Community Enterprise Foundation will support the Alpine communities, whilst Border Trust will support the Towong community. The newly established East Gippsland Community Foundation will also assist the bushfire recovery of the East Gippsland community.



Recovery is a marathon, not a sprint.

Our community-led disbursement strategy focussed on the immediate aftermath as well as the short-term, medium-term, and long-term recovery. The immediate relief phase saw 40% of funds disbursed in direct response to the devastation and was informed by the experience of partners, as well as our lived experience of natural disasters and response management.

Short, medium, and long term recovery continues to be community-led, focusing on resilience and rebuilding. The short-term recovery occurred in the year following the disaster, and the medium to long-term will continue up to 2025 and beyond.

Grants have been provided to eligible charities and not-for-profit organisations to invest in the recovery, resilience, and capabilities of their communities so that they can rebuild, reconnect, and heal.

Here is the impact that these bushfire and resilience grants are making throughout the entire recovery journey:

Immediate Relief

Informed by our partners' and our lived experience in managing disasters of this nature

Jan – Oct 2020

Up to 40% of funds disbursed to support Immediate Relief

Community Recovery

SHORT TERM
Informed by local communities

Jul 2020 – Jun 2021

Up to 60% of funds disbursed to support Community Recovery

Community Recovery

MEDIUM-LONG TERM
Informed by local communities

2021 – 2025 and beyond

It's also important to recognise the recovery process for people and communities is a very personal journey which involves key stages over time, as well as the important leadership roles some people will find themselves in as a result of the event.

Community organisations also play a critical role in rebuilding/ strengthening the social fabric within communities and supporting these groups is critical to enable them to facilitate programs, and to return to normal business.

Sharing stories from beyond the fire

Utilising a Community Enterprise Foundation grant from the Victorian Bushfire Appeal, Youth Dimensions partnered with CheekyMac Productions to produce an incredibly important documentary, *Beyond the Fire: Recovery*.

It continues the story told in season one of *Beyond the Fires*, providing important educational resources for students wanting to study the impact of the Black Summer bushfires. The documentary provides a multi-faceted view of the devastation and opinions on how to move forward.

It also follows the frustrations, triumph, and resilience of one Gippsland community, exploring how they banded together to rebuild, while highlighting that communities are still recovering physically, emotionally, and mentally 18 months on.

Through a lens of hope, this standalone documentary gives a voice to the triumphant, grassroots power of communities. Set against the stunning backdrop of Gippsland, *Beyond the*

Fire follows the journey of fire affected locations to shed a light on the power of perceived control, while providing hope for the journey still to come. It connects with local heroes and shares their courageous stories of overcoming heat, wind, and flame. It also shows the vital impact of bushfire appeals on the most affected parts of Australia.

Most importantly, it explains that there is still a long way to go.

Beyond the Fire: Recovery is now available to watch on 10play.

For more stories through a lens of hope, check out their website: www.beyondthefire.tv

You can also watch a clip from the documentary here: [Beyond the fire story](#)





“Bendigo Bank Community Enterprise Foundation has been incredible to work with. They have such an authentic heart for community led recovery, saw the vision of our mission and have backed us and the communities we are showcasing at every phase of the production. Without them, we could not have provided these communities with a voice, to share their hearts, thoughts and concerns during their road to resilience and recovery. People’s lives have been deeply touched because they feel they have been heard and that someone cares. We can’t thank the Foundation and their generous donors enough!”

Danielle McAlpine Johnson
Writer | Director | Producer
CheekyMac Productions

Supporting Mallacoota after the fires

We all saw the scenes of Mallacoota locals on the beach waiting to be rescued during the devastating bushfires in 2020, but do you ever wonder how they are going now?

Since the devastation of Black Saturday, \$4.3 million has been distributed into the Mallacoota community through our Bushfire Appeals. Significant funding has been provided to those who lost their principal place of residence, a youth worker, and the redevelopment of the Mallacoota skate park. Grants have also been provided for young people to get back to school and work.

This heart-warming video provides some insight into the wonderful work being done in Mallacoota to create a great future.

Watch the Mallacoota after the fires video [here](#).





“It’s really important to support our local communities in crisis. Because we are there for the local community, we are part of it and it’s part of our DNA. We are there both after the immediate crisis and through the long term.”

Ken Spackman
Community Bank, Mallacoota

Strengthening fire services

The Community Enterprise Foundation continues to work closely with the bushfire affected areas of Queensland.

Our local Directors at Community Banks Stanthorpe and Canungra have provided their regional knowledge and expertise to highlight the needs of local organisations. As a result, our Bendigo Bank Queensland Bushfire Appeal has strategically injected \$350,000 into the Scenic Rim and more than \$200,000 to the Stanthorpe region to assist the recovery, resilience, and preparedness of the fire affected regions in Queensland.

A recent grant to the Canungra Rural Fire service has also enabled them to purchase a 4x4 to help with transporting their Polaris to fire grounds within the region. In the event of a fire, the brigade needs to act swiftly to mitigate damage and the new vehicle is vital to the brigade's defence.



Bringing business and community together, for the better

More than two years on, the South Coast of NSW is still recovering from the destruction caused by the 2020 bushfires. Therefore, a Community Enterprise Foundation grant of \$250,000 will assist in strengthening the future of the region.

The grant will help to establish the Better Together program, utilising the generous donations to the

NSW Bushfire Appeal. The community-led program brings together a series of co-designed events, resources, and initiatives that will connect and strengthen the business and community sectors.

Community Bank Milton and South Coast has also engaged Milton Ulladulla Business Chamber and Community Connect Southern Shoalhaven to build local capacity, reinvigorate the community, and empower local action over the next three years.

Better Together has the capacity to become the region's cornerstone. Their goal is to not only aid their recovery, but the entire region's future development and resilience.



Rotary and Bendigo Bank's natural disaster response

Along with the challenges of the pandemic, over the last three years, drought, bushfires and floods have devastated communities. Joining forces with Bendigo Bank has assisted Rotary to develop new strategic approaches to assisting community recovery from natural disasters. Our two iconic brands have a shared mission to enable natural disaster recovery with a long-term and community informed view. The partnership has a national focus, but with local execution at the heart of all project delivery.

Great Northern Brewing Company a trusted partner of Rotary has also rolled up its sleeves to generously activate fundraising campaigns in its venues. As a result of our combined power, we've generated more than \$4 million of support for communities through their natural disaster recovery journey.

In 2019, Bendigo Bank launched the Rotary Clubs of Australia Drought Appeal and through working closely with local finance counselling services, 2,400 debit cards were distributed to drought affected families who were struggling.

During the Black Summer Bushfire, the Rotary International D9800 - Australian Bushfire Disaster Relief Appeal was also established and administered by Bendigo Bank. The appeal assisted with the immediate homelessness crisis by providing caravans

and containers as temporary accommodation. Medium to long term recovery projects, such as Equine Therapy, bushfire revegetation, bushfire survivor support through Griefline, and mental health recovery programs were also funded.

In March, when the devastating floods hit South East Queensland and Northern New South Wales, the collaboration with Bendigo Bank and Great Northern Company continued. The partnership enabled us to conduct the Rotary Foundation Australia Flood Appeal and all funds raised will be distributed to Rotary Foundation Australia. The funding will provide an opportunity for local Rotary Clubs in flood affected areas to conduct community-led consultations, before scoping and applying for flood resilience grants.





Enabling rural women to reconnect and rebuild online

Financial and digital inclusion plays an essential role in building a better society. Therefore, the Victorian Women's Trust's Rural Women Online project launched this year was co-funded by the Foundation and the Helen McPherson Smith Trust.

The main goal of Rural Women Online is to fast-track women's IT ability, while advocating for reliable, affordable, and fast access to data

connectivity. The program helps rural women and those impacted by bushfires to connect online by fast tracking their access to IT training, support, and mentoring.

For more information about empowering rural women to learn digital skills, visit:
www.ruralwomenonline.org.au



‘So much of modern Australian life happens online – banking, education, health, government services, and more. IT skills enhance a woman’s economic participation and social connection, so much so that it’s become the 4th pillar of learning after reading, writing, and arithmetic!’

‘Women are first and second responders in many communities when there are disasters, such as the recent floods and ‘black summer’ bushfires. They also rebuild families, communities and local economies, so ensuring women have IT skills is critical to any current and future rebuild.’

Mary Crooks AO

Victorian Women’s Trust Executive Director,
Rural Women Online Project Director

‘Women in regional Victoria are immensely capable and deeply resilient. Rural Women Online builds on that capacity by ensuring rural women have positive opportunities to build their digital skills.’

‘Covid-19 on top of bushfire recovery has exacerbated the isolation of many women in rural Victoria. There are vital services at risk of being denied to women if they are unable to connect to online services, from maternal care, mental health support, telehealth, and violence prevention services to name but a few.’

Alana Johnson AM

Victorian Women’s Trust Chair,
Rural Women Online Project Director

Responding to flood disasters in Queensland and NSW

In response to the severe floods in South East Queensland and Northern New South Wales, Community Enterprise Foundation launched an appeal which raised \$700,000 to strengthen the social fabric of the most affected communities.

Thanks to the fundraising support of the Community Bank Tugun, the Flood Disaster Appeal also provided \$22,000 to Elanora State High School. Students faced impacts to their studies, exams, and assignments due to the loss of laptops, textbooks, and equipment. The funding helped them return to study by assisting with the replacement of lost and damaged items such as laptops, uniforms, household items, and clothing. Where required, it also provided emergency accommodation and grocery relief. Our valued project partner, The Australian Lions Foundation also came onboard to help facilitate this important community relief project.

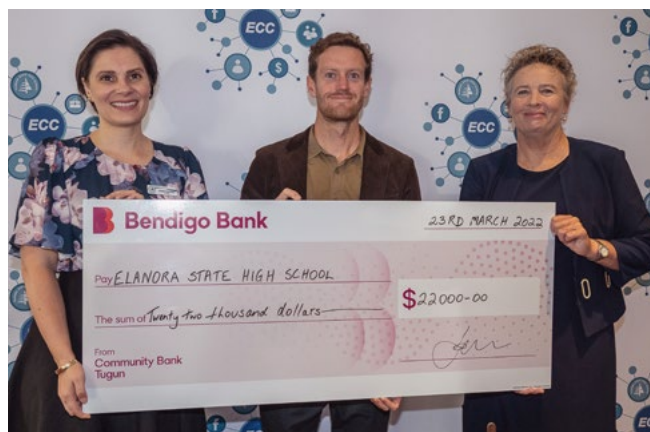
A \$30,000 grant to DAISI also addressed the immediate needs of the community in dealing with the traumatic experience of the floods, building their long-term resilience and social networks. The funding has supported the costs

of trauma counselling sessions, while leveraging funding from other philanthropic organisations to purchase a van to be used as a mobile office.

Many people's homes and livelihoods were destroyed by the flooding throughout the Northern Rivers of New South Wales, and the mobile service is now reaching those experiencing trauma and decreasing mental health and wellbeing on the ground. Through DAISI's mobile counselling service, community members are able to rebuild their lives by gaining strategies, support, and coping mechanisms. As a result, they can get back on their feet, deal with the current trauma, and continue contributing to community-life.

Visit our blog for more stories about disaster recovery.

www.bendigobank.com.au/disasterrecovery



Investing in our future leaders

The Bendigo and Adelaide Bank network invests in future generations by funding a number of scholarship programs each year. These programs support rural and regional students, Indigenous students, students aspiring to make an impact in the agribusiness sector, and students from disadvantaged backgrounds.

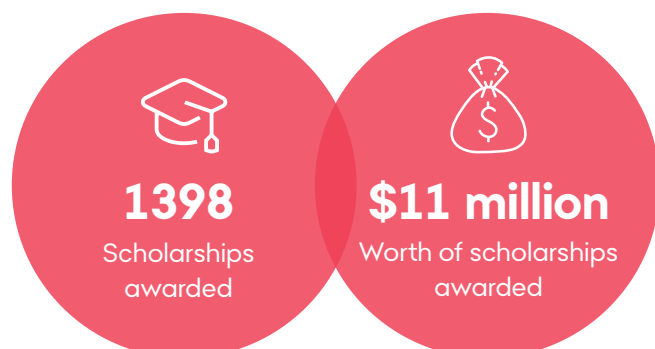
As part of the 2022 Scholarship Program, Bendigo and Adelaide Bank, in conjunction with the Community Bank network and other partners, awarded more than \$1 million to 292 students across the country. The financial support will contribute to the costs of accommodation, travel, course materials, study equipment, and tutoring.

The majority of program funding is provided by the internationally acclaimed Community Bank network, which uses a grassroots social enterprise business model that aims to create prosperity in communities. Revenue is generated by the bank's customers and invested back into the community via programs, such as the annual Scholarship Program.

The programs run each year include:

- The Bendigo and Adelaide Bank Scholarship Program for rural and regional students
- A number of localised programs through our Community Bank network
- The Bendigo Bank Indigenous Scholarship Program
- The Rural Bank Scholarship Program

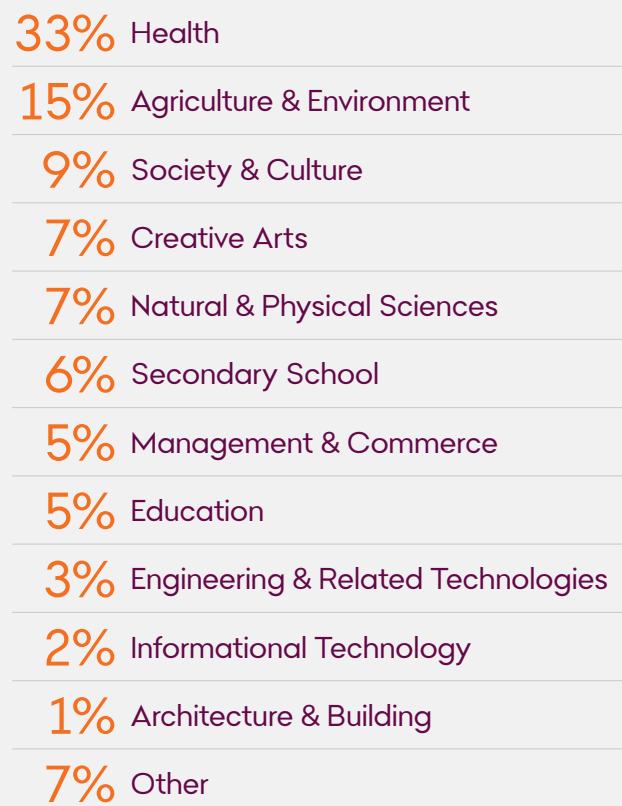
TOTAL SCHOLARSHIPS (SINCE 2007)



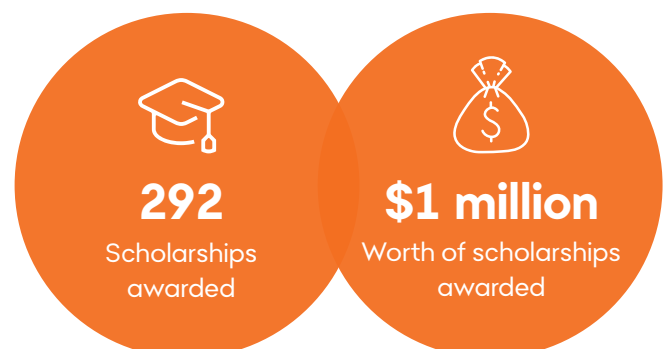
Eryn Saunders Recipient of Community Bank Doncaster East and Templestowe Village inaugural Jim Christie Scholarship



SECTORS



2022 SCHOLARSHIPS



Creating magic moments for young people

Our Community Bank companies have supported 355 youth to attend Magic Moments Youth Programs since 2012. That's an investment of \$720,000 in creating amazing community projects that help participants reach personal and academic goals.

The summit needed to go online during the pandemic, enabling teens to connect and build resilience. Magic Moments returns face to face in 2023 and will continue to mentor participants to build a better future.



Building a safer world

StandbyU was established with a clear mission: to embrace the power of human connections to build a better, safer world for everyone. They build support networks around people in need and give them a special device to keep them connected and safe.

StandbyU Foundation works with families who have been affected or escaping domestic violence, giving them the support they need to see a brighter future.

To date, a number of Community Bank partners have granted \$46,000 to support the StandbyU program.

These include:

- Community Bank Coleambally
- Community Bank North Richmond
- Community Bank Paradise Point
- Community Bank Pambula
- Community Bank Tumbarumba and the NSW Bushfire Appeal
- Community Bank Ettalong Beach

For more information visit www.standbyu.org.au



“

ANONYMOUS FEEDBACK FROM PARTICIPANTS:

‘We have been able to do things we need to do without completely feeling vulnerable and unsafe, like even going to the supermarket.’

‘We definitely felt much safer... I was able to access my support straight away, and immediately emotionally I felt better.’

Protecting young people at risk of family and domestic abuse

Our partner, Community Bank Bayswater in Western Australia is supporting Orana House with \$150,000 over three years to ensure they can provide the services of a Child and Young People's advocate, as part of our SWitCH Program.

The grant provides practical and emotional support, as well as advocacy and case management services to enable the delivery of information and protection to children and young people at risk of family and domestic violence.

This is one of five strategic partnerships that Community Bank Bayswater has formed to have greater impact with their community investments.



Creating safe living spaces

A \$2 million match funding grant from Lendlease has enabled **yourtown** to purchase a block of units in Sydney that will provide safe, stable, and affordable transitional accommodation for women and families experiencing domestic violence.

Many women and children who present to refuges have experienced multiple, unresolved, and complex traumas that have been compounded and reinforced over time by further experiences of violence and abuse.

These families face two high-risk transition points: leaving the perpetrator and leaving the refuge. Transitional housing and **yourtown's** integrated services including their trauma-informed, case managed support model, provides the physical and emotional safety required to move towards long-term, safe, and sustainable independent living.

Empowering women and girls

Our Bendigo Bank Social Investment Grants have contributed \$300,000 to organisations dedicated to supporting women and girls in vulnerable situations across regional and rural Australia this year.

Grants of \$100,000 were made to three community-based organisations: South Coast Women's Health and Welfare Aboriginal Corporation (Nowra, NSW), Children's Ground (The Gap, NT), and inTouch Multicultural Centre Against Family Violence (Melbourne, VIC).

All three groups are dedicated to supporting women and girls affected by domestic violence, homelessness, and pay inequality in regional and rural areas.

We know there are systemic issues in our country which disproportionately impact women and girls. The conversation about what we can do to create greater equality and a safer environment for women and girls raises awareness. However, actions speak louder than words,

It's vital we continue to back the valuable initiatives our community-based organisations are rolling out on the ground. Particularly for individuals and families affected by these debilitating social issues in regional and rural Australia.

The three grant recipients demonstrated a deep understanding of the problems faced by women and girls, delivered services that have a meaningful impact, and strengthened the social fabric of the communities they operate in.



About the recipients

South Coast Women's Health and Welfare Aboriginal Corporation

South Coast Women's Health and Welfare Aboriginal Corporation (www.waminda.org.au) aims to support Aboriginal women and their families to be strong, independent, prosperous, powerful, and self-determining. Its project, Empowering Our Sisters, aims to create pathways towards meaningful employment for Koori women and girls.

It achieves this by fostering Aboriginal women's participation in culturally safe workplaces, teaching skills, and sharing knowledge in the care of country.

Koori women and girls gain the opportunity to reconnect to culture and traditional knowledge as well as valuable experience through participation in plant-based industries. These include, creating products from traditional plants for food and body care, and rejuvenating and growing local traditional plants.

inTouch Multicultural Centre Against Family Violence

inTouch Multicultural Centre Against Family Violence (www.intouch.org.au) provides services, programs, and responses to family violence in migrant and refugee communities. With a commitment to changing lives and communities for the better, the group's vision is for culturally diverse families to live without violence by influencing state, national and international agendas.

Through its program, Supporting Migrant and Refugee Women in Bendigo, inTouch will establish a new formalised management program to support a regional and rural family violence service in the City of Greater Bendigo. The program will provide services and better outcomes for migrant and refugee women, their families, and their communities.

Children's Ground

Children's Ground's (www.childrensground.org.au) mission is for all children and families to live with dignity and justice, free from economic poverty.

For First Nations people in Australia, the group aspires to provide children with opportunity, strong cultural identity, and personal wellbeing by having voice and agency over their social, cultural, political, and economic future.

It also aims to educate Australians about the nation's history and celebrate First Nations culture. Its project, Angkentye arterke interkwetyeke: Empowering Women Through Employment, will focus on women's leadership and elevate the voices of First Nations women.

Bendigo Bank Social Investment Grants

Small towns are making a big difference

The Small Towns Big Difference grants program was launched in partnership with Buloke Shire, the Victorian Government's Mallee Regional Partnership, Community Bank Charlton and Donald, and Community Enterprise Foundation.

Sixteen community-based organisations across the Buloke Shire have shared in \$120,000 to deliver projects that are designed to strengthen their small communities.

The partnership was formed to provide a collaborative funding approach to help build the capacity of community organisations, grow community pride and increase resilience – helping to build more liveable communities.



Successful grant recipients of Small Towns Big Difference

Rex Theatre Museum Limited

Lowering the carbon footprint of the Rex

Nullawil Historical Society

Nullawil Historical Society health smart

Charlton Mens Shed

Solar for the Mens Shed

Lions Club of Charlton

Lions Park regeneration

Birchip Neighbourhood House

Building interactive tourism and historical information for Birchip

Donald 2000 Inc

Save Taggerty (Dining Car)

Charlton Agricultural & Pastoral Society

The Charlton Show will go on!

Nandaly Progress Association

Nandaly Community Garden

Combined Probus Club of Wycheproof

Supportive meeting chairs

Wycheproof Op Shop

Wycheproof Op Shop urn project

Wycheproof Caravan Park

Camp kitchen hot water service

Wycheproof Community Resource Centre Inc

Wycheproof Youth Group - Youth Hall upgrade

Tyrrell College

The Resilience Project

Granite Community Church

VRI hall

Nullawil Recreation Reserve

Nullawil Recreation Reserve Complex floor refurbishment

Donald Golf and Bowls Club

Fan installation

Sparking Social Enterprise in Schools

Community Bank Mansfield is working with schools in their district to support the development of student entrepreneurs, through the Social Enterprise Schools Program in partnership with the Australian Centre for Rural Entrepreneurship (ACRE).

The collaborative, hands-on program empowers young people across the globe to make a difference to causes they care about by running their own social enterprise.

The experience empowers students to ensure their voice is heard, while building positive identity by living values in action.

Thanks to the Community Bank Mansfield and district support, 213 students from four schools in Mansfield and surrounds have taken part in the program to date.

This initiative will be supported over three years and is part of the Community Bank Mansfield's impact strategy which aims to create a resilient, sustainable and thriving community.



Our Community Enterprise Foundation team



David Impey
CEO



Fiona Beckwith
Manager Appeals
and Donors



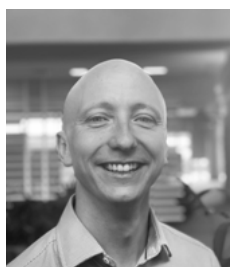
Trish Madden
Foundation
Manager



Josh Pell
Foundation
Manger



Andre Clayton
Grants & Program
Coordinator



Tim Meade
Reporting
and Program
Coordinator



Claire Hanna
Foundation
Officer



Katrina Knight
Foundation
Officer



Mathew Johnson
Foundation
Officer

Community Enterprise Foundation™

1300 304 541

communityenterprisefoundation.com.au

Grants and appeals outlined in this document are administered by the Foundation and allocated from the following trusts:

Community Enterprise Foundation (DGR) ABN 69 694 230 518

Community Enterprise Charitable Fund (TCC) ABN 12 102 649 968

Community Enterprise Foundation Disaster Relief Fund ABN 71 589 381 152



**Bendigo and
Adelaide Bank**